

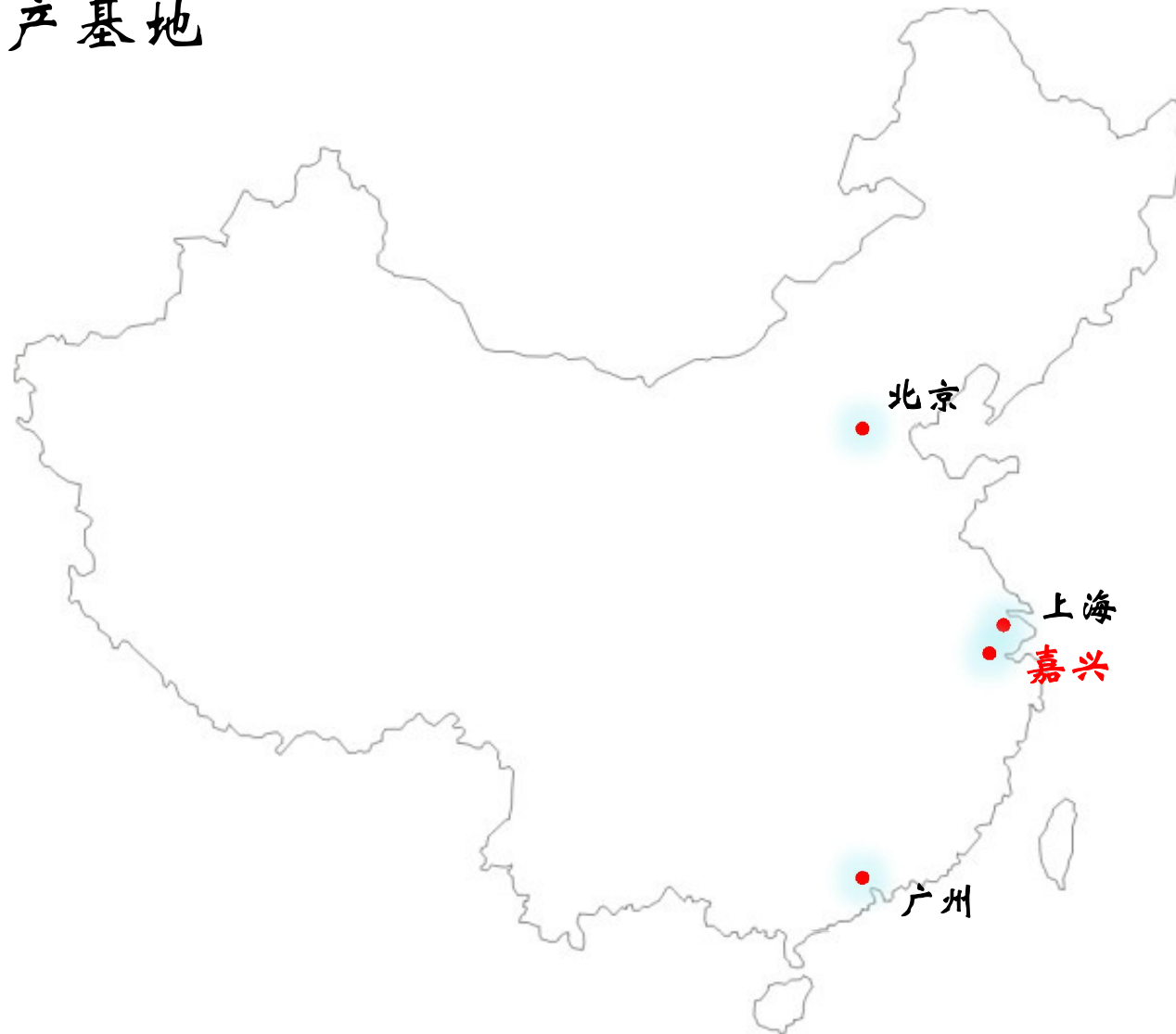


浙江震寰汽保设备有限公司

全景图



生产基地



发展历程

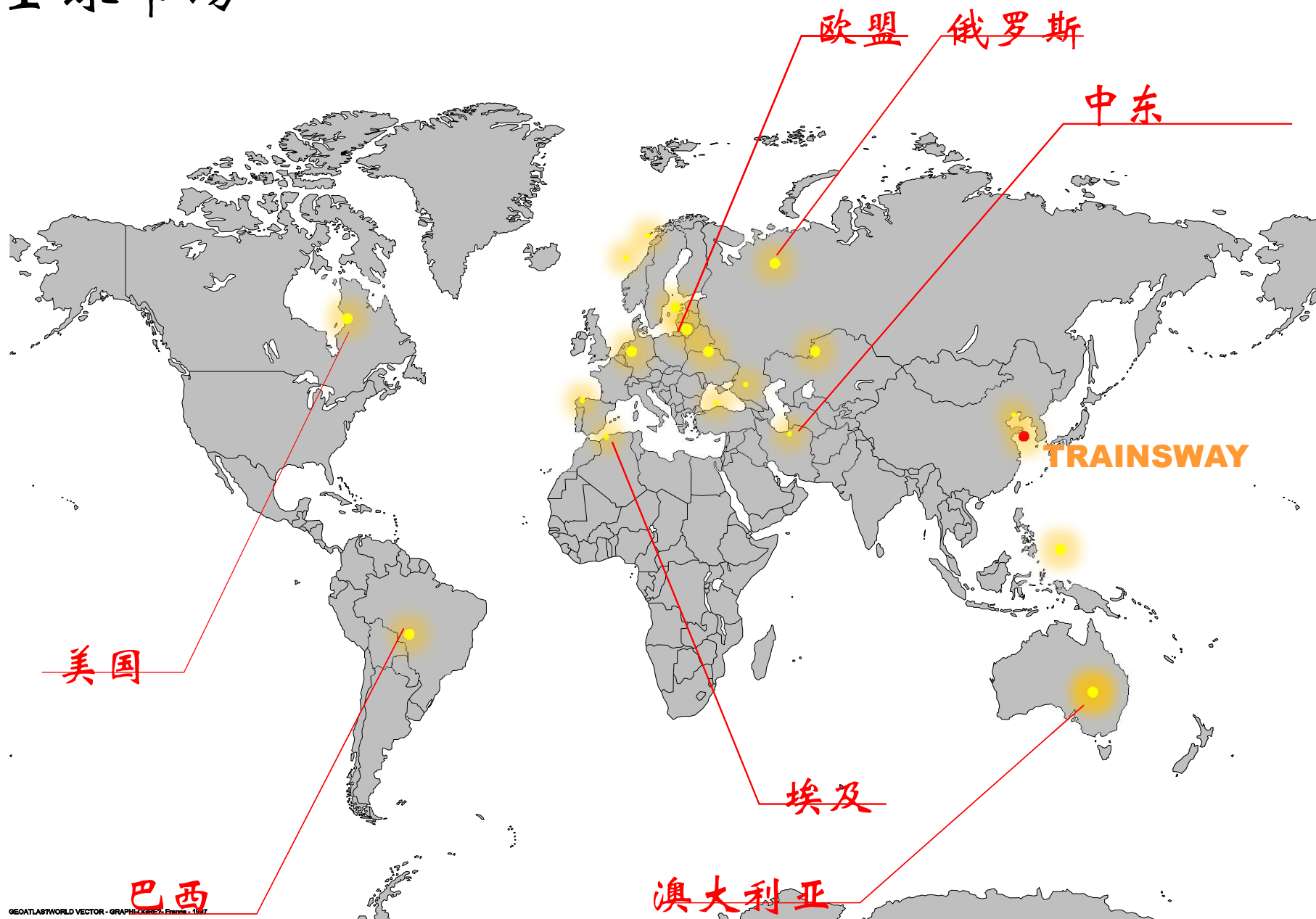
- **1991年:**在浙江省温州市成立温州震寰汽保设备有限公司
- **1997年:**生产出第一台轮胎拆装机，成为中国最早生产轮胎拆装机的厂家之一
- **1998年:**开始生产轮胎平衡机
- **2004年:**开始出口欧洲
- **2005年:**开始出口到世界各地: 美国/中东/东南亚/澳洲/俄罗斯/埃及等
- **2006年:**通过欧盟CE认证
- **2007年:**公司搬迁到浙江省嘉兴市，更名为浙江震寰汽保设备有限公司
- **2008年:**通过ISO9001质量管理体系认证

欧洲市场



- 荷兰
- 德国
- 瑞典
- 波兰
- 英国
- 土耳其
- 西班牙

全球市场



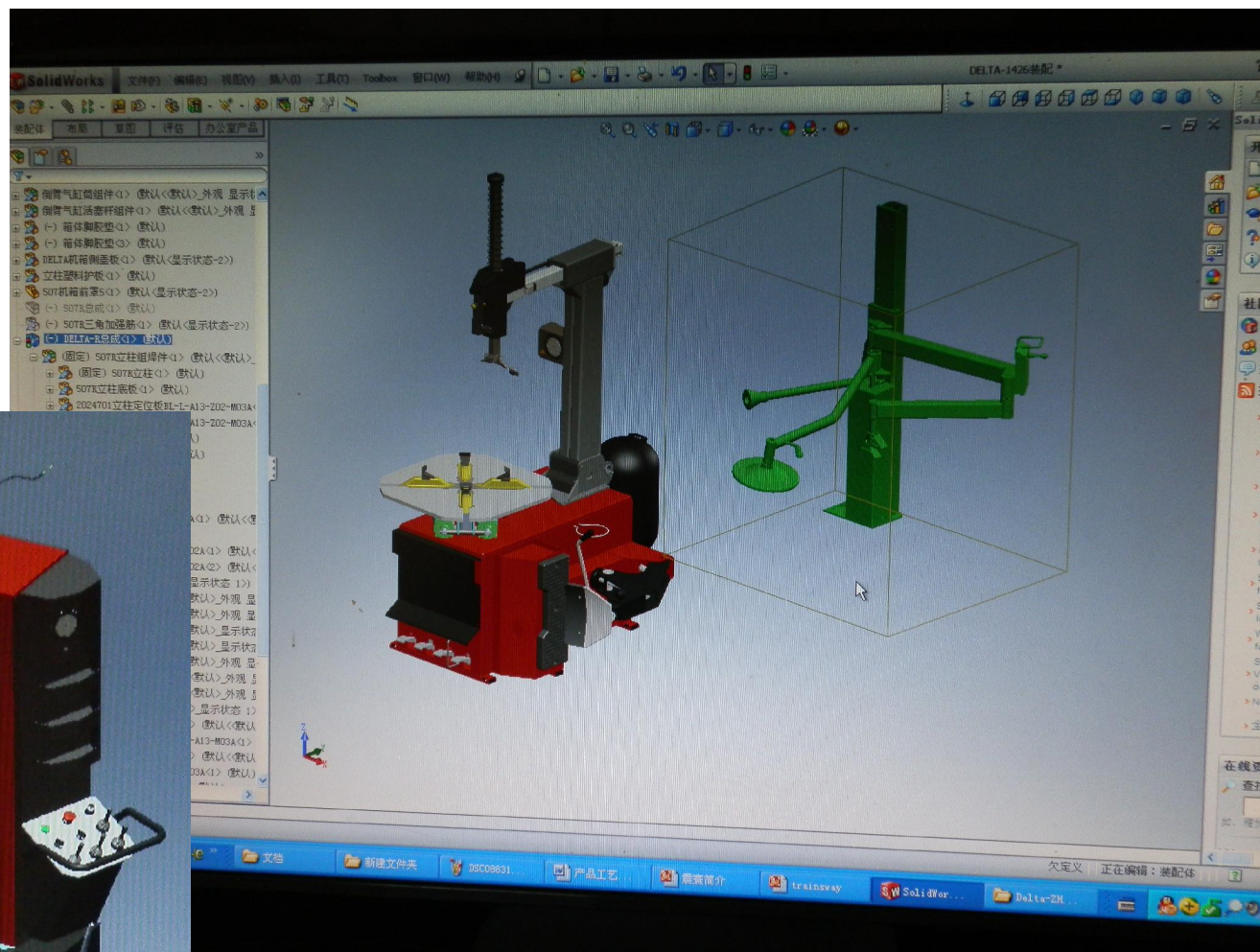
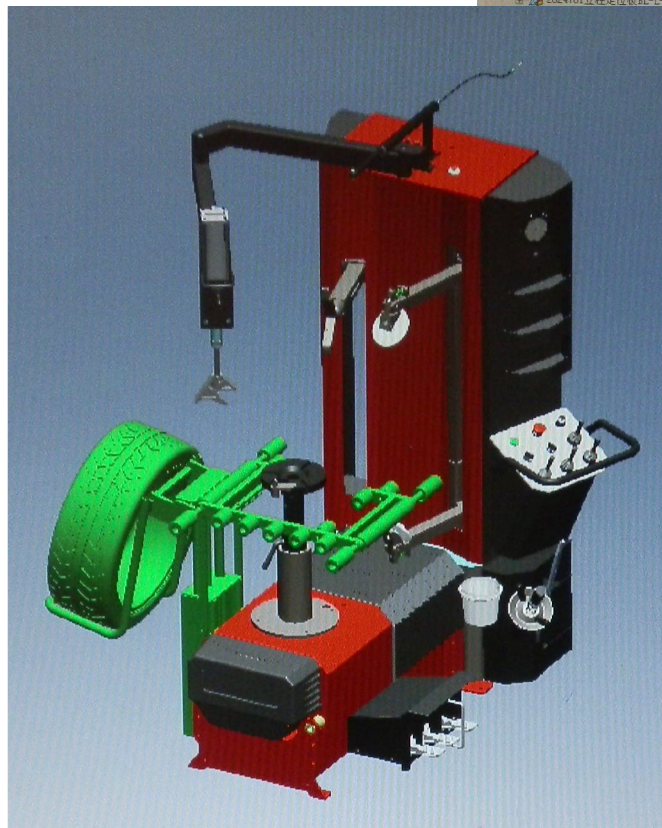
主要产品

轮胎拆装机

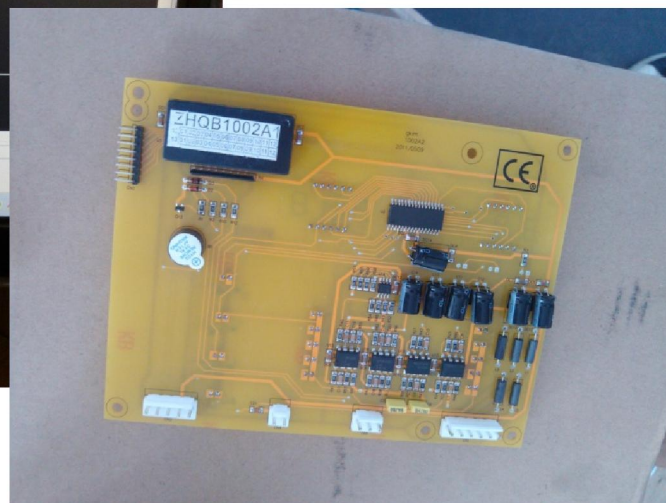
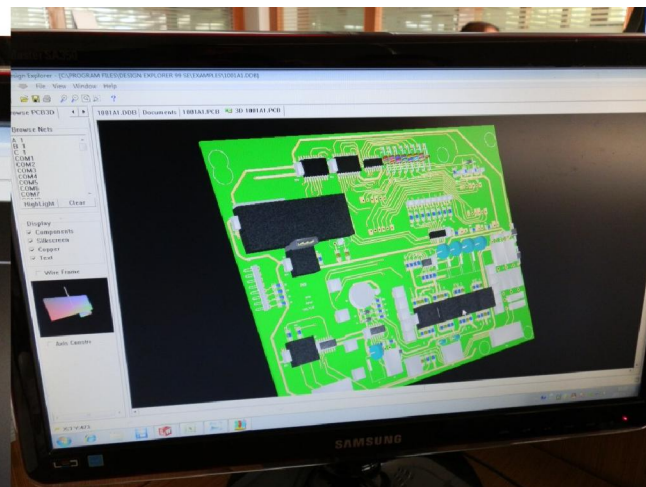
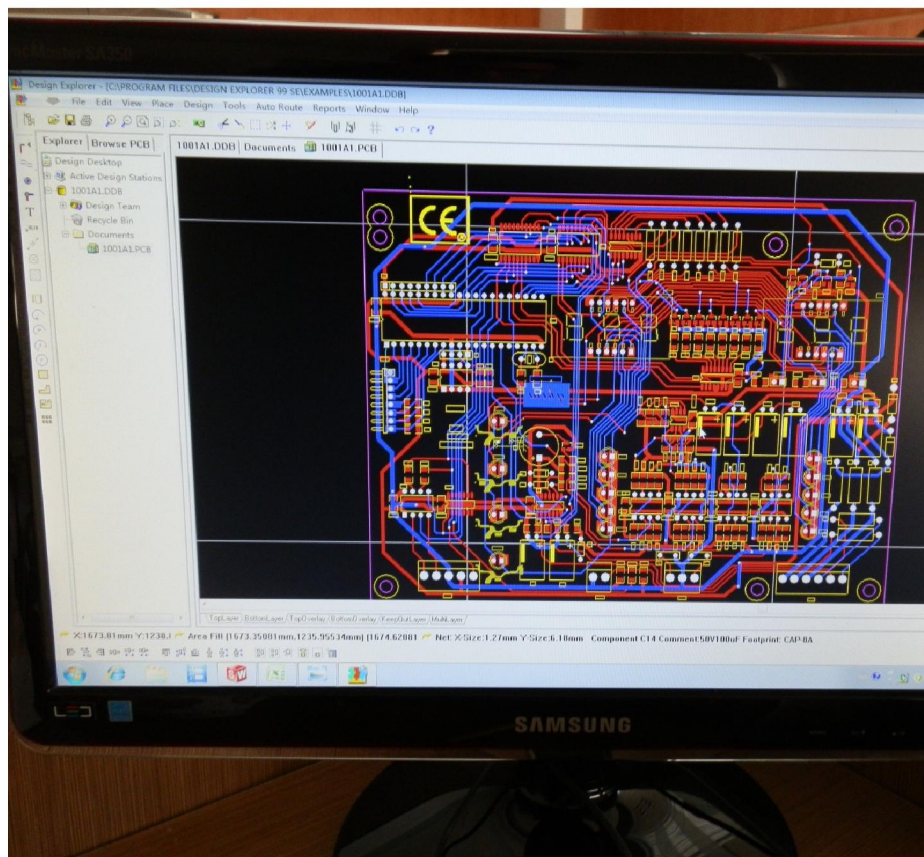


轮胎平衡机





- 技术研发:
企业拥有数位行业资深工程技术人员。自主研发生产, 轮胎拆装机从经济小机型到高端液压自动机型全覆盖, 产品开发始终与世界著名品牌同步。



技术研发:

企业拥有多名行业资深工程技术人员，软硬件自主研发。平衡机相同规格机型性能参数处于国内领先水平，并与著名大学（哈工大）长期技术合作。

其他产品



产能

车间面积: 14,967 平方米

工人数量: 81 人

月产量: 1000 套

剪板



折弯



机械加工



机械加工





焊接



喷涂

焊接工装





轮胎拆胎机装配



轮胎平衡机装配



供應商樣品檢驗報告

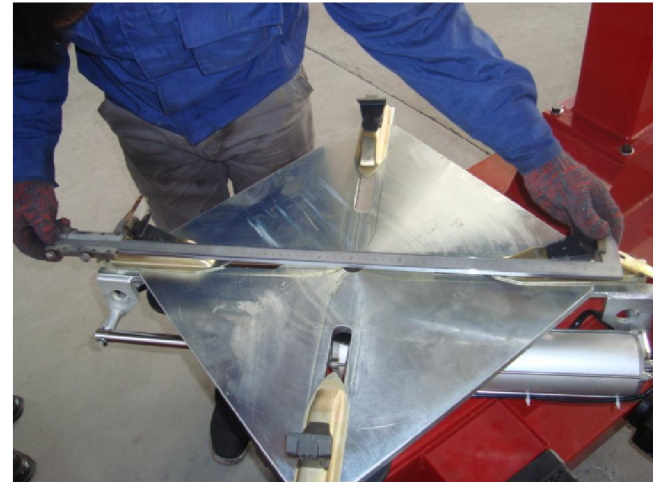
拆装机装配作业表				生产编号: 1210268
序号	名称	责任人签字	完成时间	备注
1	大盘总成	刘忠志	2012.10.15	机壳: 11-355F
2	部件装配	刘忠志	10.19	颜色: 蓝色 □ 蓝色 □ 灰 □ 其它
3	主机装配	刘忠志	10.20	电压: □ 110V/60Hz □ 220V/50Hz □ 300V
4	辅助装配	刘忠志	2012.10.20	结构: 卧式 □ 立式 □ 工业 □ 无刷 □ 其它
5	整机调试	刘忠志	2012.10.20	包装: <input checked="" type="checkbox"/> 常规包装 <input type="checkbox"/> 小包装 <input type="checkbox"/> 整体包装
6	贴标定码	刘忠志	10.20	
7	配件清单	陈浩	10.13	
8	品质检验	陈浩	2011.10.21	
9	包装	刘忠志	2012.10.20	

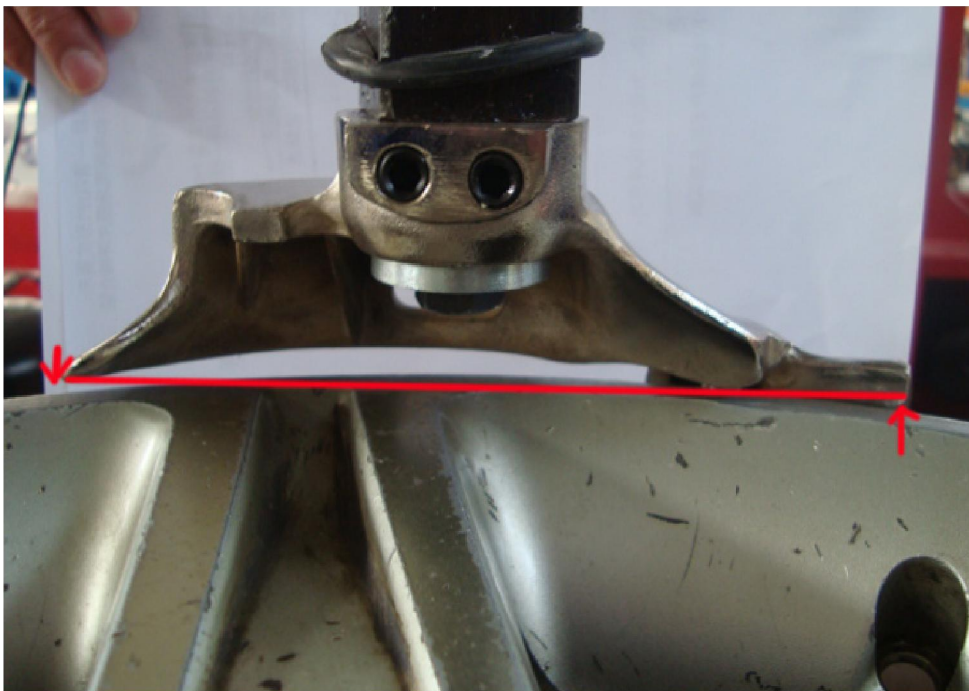
[illegible]

平衡机装配作业表		生产编号: 1210352	
称	责任人签字	完成时间	备注
配	蔡山杰	2012.10.13	机型:
试	包俊	2012.10.15	SIM-99A
调	钱芳琴	2012.10.17	颜色: <input checked="" type="checkbox"/> 红色 <input type="checkbox"/> 蓝色
单	吴祝胜	2012.10.17	<input type="checkbox"/> 灰色 <input type="checkbox"/> 其它
合	徐毅	2012.10.17	电压: <input type="checkbox"/> 110V/60Hz
	92201	2012.10.17	<input checked="" type="checkbox"/> 220V/50Hz
			插头: <input checked="" type="checkbox"/> 欧式 <input type="checkbox"/> 美式
			<input type="checkbox"/> 南非 <input type="checkbox"/> 其它
			包装: <input checked="" type="checkbox"/> 常规包装
			<input type="checkbox"/> 小包装



- 卡爪的对称度
检验





平行度检验



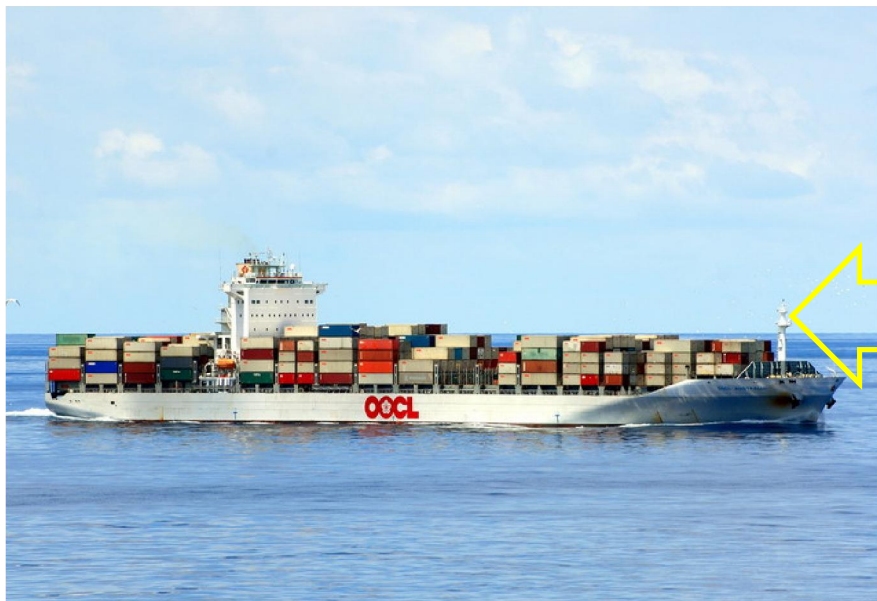
垂直度检验



检验



包装



运输



装箱



办公室



样品室

上海法兰克福汽配展







德国法兰克福汽配展



欧盟CE证书

 ISTITUTO GIORDANO		Istituto Giordano S.p.A. Headquarters Via Rossini, 2 - 47814 Bellaria-Igea Marina (RN) - Italy Tel. 0039-0541-343030 - Fax 0039-0541-345540 info@giordano.it - www.giordano.it Shanghai Representative Office Rm. 2703a, Yuyuan Rd., No.172 - Shanghai, China 200040 Tel: 0086-21-32140386 - Fax: 0086-21-62487098 info@igchina.com - www.igchina.com
MEMBERSHIP OF INTERNATIONAL SOCIETIES / PARTECIPAZIONI ASSOCIATIVE: <ul style="list-style-type: none"> - ALPI - Association of Independent Test Laboratories. - ASHRAE - American Society of Heating, Refrigerating and Air Conditioning Engineers Inc. - ASTM - American Society for Testing and Materials. - EARMMA - Research Association for Managers and Administrators. - EARTO - European Association of Research and Technology Organisations. - EGOLF - European Group of Official Laboratories for Fire Testing. - ICM (Mechanics Institute of Industrial Certification) Testing of product certification schemes and releases the "ICIM Mark". - IFT (Institut für Feststofftechnik e.V.) Laboratory testing, and surveillance at company on product certification procedures for the release of the "IFT-KIS" Quality Mark on burglar-resistance doors. - ILAC - International Laboratory Accreditation Cooperation. - IMD (Institute of Quality Marking): Testing of certification schemes for the end product and releases the "IMD-CIS Quality Mark" on fuses. - KEYMARK for thermal insulation (www.keymark.org): Authorisation dated 05/07/02, con- ceded by SGS for measurement of thermal conductivity within voluntary product certifica- tion programme CEN KEYMARK for insula- tion materials. 		
CERTIFICATE OF CONFORMITY ATTESTATO DI CONFORMITÀ		
No. 47653/1314/C Contract No. CHIG09121394		
This is to declare that the technical file of the products identified below complies with the essential requirements of European Directives 2006/42/EC (MD) and 2006/95/EC (LVD). Il presente documento attesta che il fascicolo tecnico dei prodotti identificati di seguito è in conformità con i requisiti essenziali delle Direttive Europee 2006/42/EC (MD) e 2006/95/EC (LVD).		
Description/Descrizione: TYRE CHANGER		
Models/Modelli: BL501, BL502, BL503, BL504, BL505, BL506		
Reference standards/Norme di riferimento: EN ISO 12100-1:2003 + A1:2009, EN ISO 12100-2:2003 + A1:2009, EN 60204-1:2006		
Applicant/Richiedente: ZHEJIANG ZHENHUAN AUTOMOBILE SERVICE EQUIPMENT CO., LTD. Address/Indirizzo: No. 238, Si Hua Road, Qi Xing Du Shi Jing Ji Yuan, Jia Xing City, P. R. China		
According to the procedures established by European Directives 2006/42/EC (MD) and 2006/95/EC (LVD), the Applicant can proceed with the CE marking of the above mentioned products signing the declaration of conformity and affixing the following symbol In base alle procedure stabilite dalle Direttive Europee 2006/42/EC (MD) e 2006/95/EC (LVD), il richiedente può procedere alla marcatura CE dei prodotti citati firmando la dichiarazione di conformità ed apponendo il seguente simbolo		
<div style="display: flex; justify-content: space-around; align-items: center;"> <div style="text-align: center;">  Place and date of issue Luogo e data di emissione Bellaria-Igea Marina, Italy 11 February 2010 </div> <div style="text-align: center;">  EC Directives Division Director Direttore Divisione Direttive Europee Dott. Ing. Giuseppe Persano Adorno </div> <div style="text-align: center;">  Chief Executive Officer L'Amministratore Delegato Dott. Ing. Vincenzo Iommi </div> </div>		
ISTITUTO GIORDANO S.p.A. Cod. Fisc./Part. IVA: 00 549 540 409 R.E.A. cap.C.C.I.A.A. (RN) 156768 Registro Imprese di Rimini n. 00549540409 Cap. Soc. € 1.500.000 I.V.		
This document consists of 2 sheets/Questo documento è composto da n. 2 fogli.		Sheet No. 1 of 2

 ISTITUTO GIORDANO		Istituto Giordano S.p.A. Headquarters Via Rossini, 2 - 47814 Bellaria-Igea Marina (RN) - Italy Tel. 0039-0541-343030 - Fax 0039-0541-345540 info@giordano.it - www.giordano.it Shanghai Representative Office Rm. 2703a, Yuyuan Rd., No.172 - Shanghai, China 200040 Tel: 0086-21-32140386 - Fax: 0086-21-62487098 info@igchina.com - www.igchina.com
MEMBERSHIP OF INTERNATIONAL SOCIETIES / PARTECIPAZIONI ASSOCIATIVE: <ul style="list-style-type: none"> - ALPI - Association of Independent Test Laboratories. - ASHRAE - American Society of Heating, Refrigerating and Air Conditioning Engineers Inc. - ASTM - American Society for Testing and Materials. - EARMMA - Research Association for Managers and Administrators. - EARTO - European Association of Research and Technology Organisations. - EGOLF - European Group of Official Laboratories for Fire Testing. - ICM (Mechanics Institute of Industrial Certification) Testing of product certification schemes and releases the "ICIM Mark". - IFT (Institut für Feststofftechnik e.V.) Laboratory testing, and surveillance at company on product certification procedures for the release of the "IFT-KIS" Quality Mark on burglar-resistance doors. - ILAC - International Laboratory Accreditation Cooperation. - IMD (Institute of Quality Marking): Testing of certification schemes for the end product and releases the "IMD-CIS Quality Mark" on fuses. - KEYMARK for thermal insulation (www.keymark.org): Authorisation dated 05/07/02, con- ceded by SGS for measurement of thermal conductivity within voluntary product certifica- tion programme CEN KEYMARK for insula- tion materials. 		
CERTIFICATE OF CONFORMITY ATTESTATO DI CONFORMITÀ		
No. 47802/1315/C Contract No. CHIG09121395		
This is to declare that the technical file of the products identified below complies with the essential requirements of European Directives 2006/42/EC (MD) and 2006/95/EC (LVD). Il presente documento attesta che il fascicolo tecnico dei prodotti identificati di seguito è in conformità con i requisiti essenziali delle Direttive Europee 2006/42/EC (MD) e 2006/95/EC (LVD).		
Description/Descrizione: TYRE BALANCER		
Models/Modelli: SBM96A, SBM96B, SBM99, SBM95, SBM200		
Reference standards/Norme di riferimento: EN ISO 12100-1:2003 + A1:2009, EN ISO 12100-2:2003 + A1:2009, EN 60204-1:2006		
Applicant/Richiedente: ZHEJIANG ZHENHUAN AUTOMOBILE SERVICE EQUIPMENT CO., LTD. Address/Indirizzo: No. 238, Si Hua Road, Qi Xing Du Shi Jing Ji Yuan, Jia Xing City, P. R. China		
According to the procedures established by European Directives 2006/42/EC (MD) and 2006/95/EC (LVD), the Applicant can proceed with the CE marking of the above mentioned products signing the declaration of conformity and affixing the following symbol In base alle procedure stabilite dalle Direttive Europee 2006/42/EC (MD) e 2006/95/EC (LVD), il richiedente può procedere alla marcatura CE dei prodotti citati firmando la dichiarazione di conformità ed apponendo il seguente simbolo		
<div style="display: flex; justify-content: space-around; align-items: center;"> <div style="text-align: center;">  Place and date of issue Luogo e data di emissione Bellaria-Igea Marina, Italy 23 February 2010 </div> <div style="text-align: center;">  EC Directives Division Director Direttore Divisione Direttive Europee Dott. Ing. Giuseppe Persano Adorno </div> <div style="text-align: center;">  Chief Executive Officer L'Amministratore Delegato Dott. Ing. Vincenzo Iommi </div> </div>		
ISTITUTO GIORDANO S.p.A. Cod. Fisc./Part. IVA: 00 549 540 409 R.E.A. cap.C.C.I.A.A. (RN) 156768 Registro Imprese di Rimini n. 00549540409 Cap. Soc. € 1.500.000 I.V.		
This document consists of 2 sheets/Questo documento è composto da n. 2 fogli.		Sheet No. 1 of 2

ISO9001质量管理体系认证证书

DIRECT ASSESSMENT SERVICES



**Quality Management System
Certificate of Approval**

This is to certify that the Quality Management System of

Zhejiang Zhenhuan Automobile Service Equipment Co., Ltd.

No.238, Si Hua Jing Rd., Qixing Du Shi Jing Ji Yuan, Jiaxing City, Zhejiang Province, China

Has been assessed and found to meet the requirements of

ISO 9001:2000

Manufacture and Sale of Tire Changer, Wheel Balancer and other Automobile Service Equipments

Certificate Number: **Q31081118**

Date of Issue: 07, November, 2008

Valid until: 06, November, 2011

Authorized by: 
Senior Executive



Surveillance Audits






Registered
ISO 9001:2000


127

DAS Certification Ltd., Company Number: 3384526, 1 Wellington, Close, Horndean, Hampshire PO8 0UR UK
China HQ: Shanghai DAS Certification Co., Ltd.
Address: 14A, Tower A, Victoria Plaza, No. 1068 Xikang Road, Shanghai, P.R. China Zip Code: 200060
Tel: 0086-21-62773910 Fax: 0086-21-62773343 <http://www.das-china.com>



谢谢收看